

30 June 2016

Reference No. 1314750010-005-L-Rev0

Laura Beckett, Municipal Planner, Approving Officer
District of Highlands
1980 Millstream Road
Victoria, BC V9B 6H1

RESULTS OF 2013 GROUNDWATER LEVEL MONITORING PROGRAM, DISTRICT OF HIGHLANDS, BC

Dear Ms. Beckett,

As requested by the District of Highlands (the District), Golder Associates Ltd. (Golder) conducted a groundwater level monitoring program in the District of Highlands, BC (the Highlands). Golder conducted the work in accordance with our proposal titled "Work Plan and Cost Estimate for Groundwater Level Monitoring Program and Technical Support for Implementation of Groundwater Conservation and Protection Measures, District of Highlands, BC" (Golder Proposal No. P214760040-001-WP-Rev0) and dated 14 January 2013.

This letter presents the results of on-going groundwater monitoring that Golder conducted on behalf of the District through to the end of 2013. The results of the 2013 monitoring program were previously shared with the District and have been updated in this letter with information that has been received from stakeholder monitoring programs. Our letter should be interpreted and used in accordance with the limitations and considerations set out in Golder Associate Ltd.'s *Study Limitations*, provided at the end of this letter.

1.0 BACKGROUND AND OBJECTIVE

The Highlands is one of 13-member municipalities of the Capital Regional District (CRD), encompassing approximately 37 square kilometres and located northwest of Victoria, BC. The majority of the residential population¹ of approximately 2,120 obtains potable water from private, individual water wells. Commercial groundwater use is limited to the southern portion of the Highlands. The Hanington Estates subdivision, located along the southern portion of the Highlands, obtains water from a water system ("Hanington system") that is supplied by two communal water supply wells. Irrigation water for the Bear Mountain Golf Course (Bear Mountain) is sourced from groundwater wells located within the Highlands. Some businesses within the Millstream Industrial Park, located in the Highlands and Langford, also use groundwater for commercial purposes.

¹ BC Stat, 2011. 2011 Census Total Population Results, Municipalities by Regional District. Available on-line at: <http://www.bcstats.gov.bc.ca/StatisticsBySubject/Census/2011Census/PopulationHousing/MunicipalitiesByRegionalDistrict.aspx>



1.1 Aquifer Description

Groundwater supplies within the Highlands are derived primarily from drilled wells completed in the Wark-Colquitz Aquifer. This bedrock aquifer is identified as Aquifer No. 680 by the BC Ministry of Environment (MoE) and is categorized as class IIB under the BC Aquifer Classification System, indicating moderate demand relative to aquifer productivity and moderate vulnerability of the aquifer to contamination from surface sources. Sewage servicing within the Highlands is by individual septic systems.

1.2 Highlands Monitoring Program

Golder has conducted groundwater level monitoring in the Highlands since 2009 in support of the District's Groundwater Protection Study. The water-level information was used to assess seasonal water-level variations and, in 2012, to refine the Highland's numerical groundwater model, which was in turn used to develop groundwater conservation and protection measures. At the completion of the study, Golder recommended that the District continue to monitor groundwater conditions in the Highlands to assess long term trends. If trends were to be observed, the results would provide the basis for guiding implementation of management strategies including the conservation and groundwater protection measures, and public education efforts previously identified. Further details are provided in Golder's report titled "Phase 3: Groundwater Protection Study District of Highlands, District of Highlands Victoria, BC" (Golder Report No. 0714140014-501-R-Rev2-3000) and dated 18 December 2012.

At present, electronic data loggers (i.e., pressure transducers) are present in six monitoring wells located across the Highlands to collect continuous water-level data, and one additional pressure transducer (a "barologger") is present to monitor changes in barometric (i.e., atmospheric) pressure. The locations of monitoring wells DOH-01, DOH-02A, DOH-03, DOH-04B, DOH-07B and DOH-09A are presented on attached Figure 1.

Monitoring wells DOH-1, DOH-02A, DOH-07B and DOH-09A are unused wells that are not equipped with pumps (i.e., are not in operation); therefore, the water levels in these wells are representative of groundwater levels in the aquifer in the vicinity of the wells. DOH-03 and DOH-04B are equipped with pumps and operated as supply wells for non-potable uses (i.e., not for drinking water), and therefore, the water levels in these wells may not be representative of the water levels in the aquifer when these wells are in operation.

1.3 Objective

The objective of the 2013 groundwater level monitoring program was to compile and analyse data from the Highlands and stakeholder monitoring programs to assess regional groundwater conditions and potential long-term trends.

2.0 METHODS

2.1 Groundwater Level Monitoring

The transducers that are installed in the Highlands monitoring wells, including the barologger that is deployed at monitoring location DOH-02A, are programmed to collect data every twelve hours. Golder downloaded pressure transducer data and collected a manual depth-to-water measurement at each monitoring location in the Highlands on 19 February and 19 April 2013 and 13 February 2014.

2.2 Data Compilation and Analysis

In addition to the District's monitoring program, Golder also obtained data from other stakeholder monitoring programs in the Highlands including:

- BC Ministry of Environment (MoE) Observation Well Network: water-level data available on-line from the MoE for Observation Well No. 372, located in the western portion of the Highlands;
- Hanington Estates Water System: flow data available from Island Flow Control Water Solutions Ltd. for the Hanington Estates Water System, in the southern portion of the Highlands;
- Bear Mountain Monitoring Program: water-level and flow data available from the Bear Mountain Golf and Country Club in the southern portion of the Highlands; and
- University of Victoria (UVic) School-Based Weather Station Network: data available on-line for four UVic weather stations, located at various areas of the Highlands.

The locations of the monitoring wells and weather stations from the various stakeholder monitoring programs are also presented on Figure 1.

Golder compiled the raw pressure data from the Highlands monitoring wells and corrected the data for variations in barometric pressure, as recorded by the barologger, to calculate groundwater levels for each Highlands monitoring well. Golder also compiled data available from MoE Observation Well No. 372, Environment Canada's Highland Weather Station and the UVic weather stations. Golder plotted the data from the Highlands and stakeholder monitoring programs and analysed the results to assess seasonal and long-term trends.

Golder reviewed the flow data for the Hanington Estates Water System. Golder also reviewed the results from the Bear Mountain Monitoring Program presented in the report prepared by Thurber Engineering Ltd. (Thurber) titled "2012-2013 Annual Groundwater Monitoring Report Bear Mountain Development" (Thurber File No. 19-3713-5) and dated 13 January 2014. Golder did not conduct a detailed review of the data presented in Thurber's report. Rather, Golder assessed the results from the Bear Mountain Monitoring Program in the context of the regional groundwater system.

3.0 RESULTS AND DISCUSSION

3.1 District of Highlands Monitoring Program

Detailed water-level data for monitoring wells DOH-01, DOH-02A, DOH-03, DOH-04B, DOH-07B and DOH-09A for the period from 1 October 2010 through 31 December 2013, together with daily precipitation data from nearby weather stations are presented on Figures 2 through 7.

Water levels recorded in the majority of the Highlands monitoring wells in 2013 generally exhibited a pattern that was consistent with those observed in previous years. Water levels were generally stable during the wet season between December and April, declined during the drier months from approximately May to September and increased in response to precipitation in October and November. Seasonal responses were similar to those observed in previous years, generally being greater in the monitoring wells located in inferred recharge areas at higher elevations. The seasonal variation observed in the water level of DOH-02A, located at an elevation of over 260 metres above sea level (masl), was approximately 14 metres (m). In comparison, the water levels in monitoring wells DOH-03 and DOH-09A, located in inferred discharge areas adjacent to wetlands, exhibited seasonal responses of up to approximately 3 m and 5 m in 2013, respectively.

The seasonal low groundwater levels observed at the end of the dry season in 2013 were higher by approximately 0.2 m (DOH-09A) to 2.2 m (DOH-02A) when compared to the results from 2012. These data are consistent with patterns of precipitation, which was greater in 2013 than 2012, particularly during the dry summer months. A total of 973 millimetres (mm) of precipitation was reported for the West Highlands District Firehall weather station in 2013 compared to 844 mm reported for this station in 2012. In 2013, 152.4 mm of precipitation was recorded for the weather station between 1 May and 15 September with the winter rain beginning at the end of August. In comparison, 45.5 mm of precipitation was recorded between 1 May and 30 September 2012 and the wet season began approximately in mid-October.

During the wet season, water levels in the Highlands monitoring wells responded to periods of greater precipitation, generally increasing by approximately 1-2 m, indicating a strong hydraulic connection to direct infiltration of precipitation and/or surface water bodies. The water levels in DOH-03, DOH-04B and DOH-09A exhibited relatively stronger responses to precipitation events during the winter season than periods when the pumps in these wells were periodically operated for non-potable water use at the District Office and the washroom facilities at Caleb Pike Heritage Park, respectively (Figures 4 and 5). The water level in monitoring well DOH-1, which is located less than 10 m south of an ephemeral stream that flows during precipitation events, continued to be more than 10 m below the ground surface, suggesting a relatively weak hydraulic connection between the well and flowing surface water at ground surface (Figure 2). The water level in this well exhibited a relatively strong response to pumping in an adjacent domestic well.

3.2 BC Ministry of Environment Observation Well

Water-level data for MoE Observation Well No. 372 (MoE Well No. 372) are plotted with precipitation data from an adjacent weather station on Figure 8.

The water levels measured in MoE Well No. 372 were generally consistent with those measured in the Highlands monitoring wells, with seasonal variations in this well generally 10-15 m. The water level in MoE Well No. 372 was reported to be approximately 5 m higher in March 2013 when compared to the winter periods in 2011 and 2012. This high water levels observed in early January and mid-March of 2013 may reflect greater precipitation during those periods.

3.3 Hanington Estates Water System

Water supply for the Hanington Estates Water System is sourced from two groundwater supply wells. Well 409 (Well Tag No. 85183) is operated as the primary water supply for the Hanington System and Well 500 (Well Tag No. 85184) is operated periodically as a backup supply. The total flows from wells 409 and 500 were reported to be 23,462 cubic metres (m³) and 5,778 m³, respectively, for a combined flow of 29,240 m³ for the period 15 February 2013 to 6 March 2014. The average groundwater use during 2013 is calculated to be approximately 76.1 m³/day and anticipated to be higher during the drier, hotter summer season. The average daily flow in 2013 is consistent with the average water use that was predicted in the Groundwater Protection Study to range from 49.9 m³/day in the winter to 118.9 m³/day in the summer following full build-out (Golder 2012).²

² Golder Associates Ltd., 2012. Phase 3: Groundwater Protection Study District of Highlands. District of Highlands, Victoria, BC. Golder File No. 07-1414-0014. December 2012.

Based on an estimated population of 161 residents in Hanington Estates³, the average water use at Hanington Estates is calculated to have been approximately 473 litres per person per day (L/p/d) in 2013.

Water level data were not provided for Well 409 and Well 500.

3.4 Bear Mountain Monitoring Program

The results of the Bear Mountain Groundwater Monitoring Program for 2012-2013 were reported by Thurber (2014). Bear Mountain pumped a total volume of approximately 142,000 m³ from irrigation wells 407 and 411 at intermittent pumping rates of approximately 5.7 litres per second (L/s) and 10.1-10.4 L/s, respectively, between 29 April and 24 September 2013. Continuous water level data were collected with dedicated pressure transducers that were deployed in pumping wells 407 and 411, and monitoring wells 413 and 414. Pumping wells 407 and 411 are each equipped with a flow meter to measure flow rates. In addition to water level and flow rate monitoring, water samples were also collected from each pumping well in September 2013 and submitted to an analytical laboratory for a suite of parameters that included major ions, total metals, biological oxygen demand (BOD) and chemical oxygen demand (COD) and pesticides. Locations of the Bear Mountain wells are presented on Figure 1.

The drawdown of approximately 40 m and 55 m observed in pumping wells 407 and 411, respectively, by the end of the dry season in 2013 was less than what was reported for the previous year, when water levels were approximately 5 m (407) and 8 m (411) lower. The pumping wells were operated until mid-October in 2012, approximately three weeks later than in 2013. The water levels in observation wells 413 and 414 were very similar in 2012 and 2013. These observation wells are interpreted by Thurber to be hydraulically separate from the lineament (i.e., fault/fracture zone) in which the pumping wells are completed. Thurber noted that the extent of the drawdown from operation of 407 and 411 is not known, as there are no monitoring wells upgradient (north) from the pumping wells. Thurber also report that the lineament is interpreted to extend to a lightly populated area of the Highlands.

Thurber reported that none of the analysed water quality parameters exceeded the respective Health Canada Canadian Drinking Water Quality Guidelines and pesticide parameters were reported at concentrations below the laboratory method detection limits.

4.0 CONCLUSIONS AND RECOMMENDATIONS

The results from the 2013 groundwater monitoring program indicate that water levels were slightly higher during the dry season when compared to the previous year. The water levels observed in 2013 are inferred to reflect greater total annual precipitation and a shorter dry season than what was observed in 2012. No discernable long term water level trends were observed over the monitoring period; however, trends in water levels may emerge with a longer data record.

Golder recommends that the groundwater monitoring program continue in 2014, as it provides the technical basis to assess seasonal patterns and long term trends in groundwater levels across the Highlands. The District may wish to share the results from the monitoring program with residents and/or other interested parties to support the District's ongoing outreach and public education initiatives.


³ Population information, as provided by the District of Highlands in June 2016, based on Stats Canada 2011 Census data and number of developed properties.

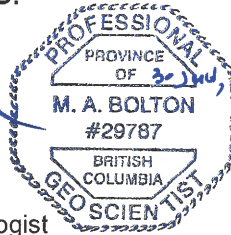
It is also recommended that detailed flow and water level data for the Hanington Estates water system be obtained and reviewed to assess seasonal patterns and potential long term trends associated with the Hanington groundwater supply wells. To facilitate this level of assessment, it is recommended that flow data be collected on a monthly to quarterly basis.


5.0 CLOSURE

We trust the above information meets your current needs. If you have any questions or require additional information, please do not hesitate to contact the undersigned.

GOLDER ASSOCIATES LTD.


Mark Bolton, MSc, PGeo
Associate, Senior Hydrogeologist




Jillian Sacré, MSc, PGeo
Principal, Senior Hydrogeologist

MAB/JPS/lmk

Attachments:

- Figure 1: Monitoring Locations District of Highlands
- Figure 2: Depth to Groundwater Monitoring Well DOH-01 and Precipitation in Southern Highlands
- Figure 3: Depth to Groundwater Monitoring Well DOH-02A and Precipitation in Western Highlands
- Figure 4: Depth to Groundwater Monitoring Well DOH-03 and Precipitation in Southern Highlands
- Figure 5: Depth to Groundwater Monitoring Well DOH-04B and Precipitation in Western Highlands
- Figure 6: Depth to Groundwater Monitoring Well DOH-07B and Precipitation in Northern Highlands
- Figure 7: Depth to Groundwater Monitoring Well DOH-09A and Precipitation in Eastern Highlands
- Figure 8: Depth to Groundwater Monitoring Well MoE Observation Well 372 and Precipitation in Western Highlands

o:\final\2013\1435\13-1435-0010\1314350010-005-l-rev0\1314350010-005-l-rev0-2013 annual report-30jun_16.docx

6.0 STUDY LIMITATIONS

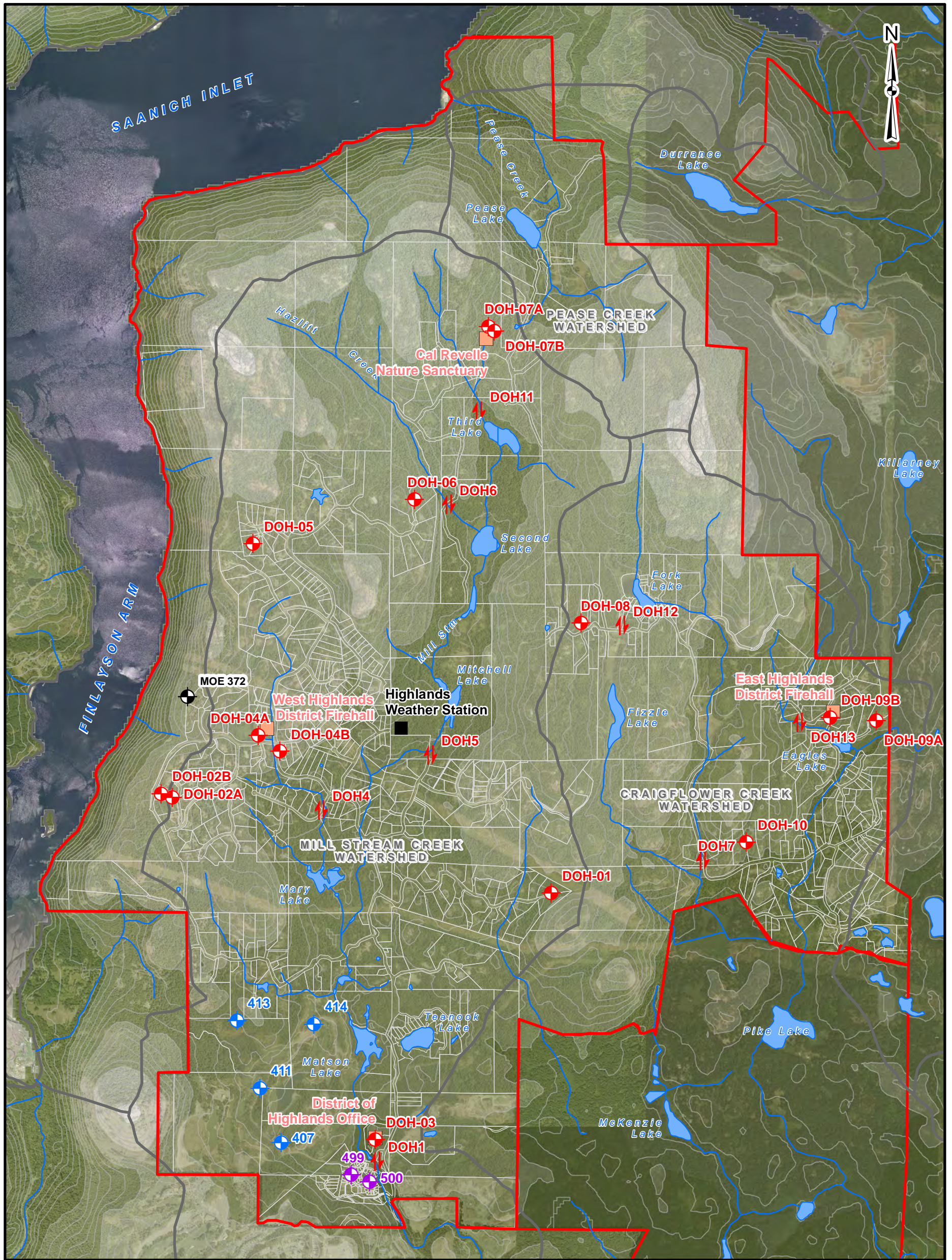
Golder Associates Ltd. (Golder) has prepared this letter in a manner consistent with that level of care and skill ordinarily exercised by members of the landfill engineering and science professions currently practicing in British Columbia, subject to the time limits and physical constraints applicable to this letter. No other warranty, express or implied is made.

The letter is of a summary nature and is not intended to stand alone without reference to the instructions given to Golder by the Client, communications between Golder and the Client, and to any other letters prepared by Golder for the Client relative to the specific site described in the letter. In order to properly understand the suggestions, recommendations and opinions expressed in this letter, reference must be made to the whole of the letter. Golder cannot be responsible for use by any party of portions of the letter without reference to the entire letter and other relevant communications between Golder and the Client.

In preparing this letter, Golder has relied in good faith on information provided by the individuals and agencies noted in this letter. We accept no responsibility for any deficiency or inaccuracy contained in this letter as a result of errors, omissions, misinterpretations or fraudulent acts of the persons or agencies contacted.

The information, recommendations and opinions expressed in this letter are for the sole benefit of the Client. No other party may use or rely on this letter or any portion thereof without Golder's express written consent. The letter, all plans, data, drawings and other documents as well as all electronic media prepared by Golder are considered its professional work product and shall remain the copyright property of Golder, who authorizes only the Client to make copies of the letter, and only in such quantities as are reasonably necessary for the use of the letter by those parties. The Client may not give, lend, sell, or otherwise make available the letter or any portion thereof to any other party without the express written permission of Golder. The Client acknowledges that electronic media is susceptible to unauthorized modification, deterioration and incompatibility and therefore the Client cannot rely upon the electronic media versions of Golder's letter or other work products.

If new information is discovered in the future, Golder Associates Ltd. should be requested to re-evaluate the content of this letter and provide amendments as required prior to any reliance upon the information presented herein.

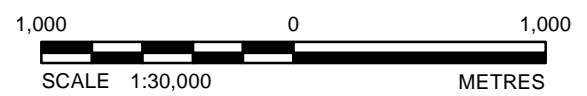


LEGEND

- District of Highlands Monitoring Well Location
- Stream Flow Measurement Location (2010)
- Hanington Creek Estates Well
- Bear Mountain Monitoring Well
- Ministry of Environment Observation Well No. 372
- Environment Canada Weather Station
- University of Victoria Weather Station
- Contour (20m Interval)
- Watercourse
- Waterbody
- Cadastre Information
- Major Watershed Boundary
- Municipality Boundary
- Elevation - metres above sea level (masl)**
- 0 - 100
- 101 - 200
- 201 - 300
- 301 - 400
- 401 - 500

REFERENCE

Data provided by the District of Highland and BC ILMB.
 Base data provided by the Ministry of Environment, WMS.
 Hydrology obtained from Canvec© Department of Natural Resources Canada. All Rights Reserved.
 Projection: Transverse Mercator Datum: NAD 83 Coordinate System: UTM Zone 10



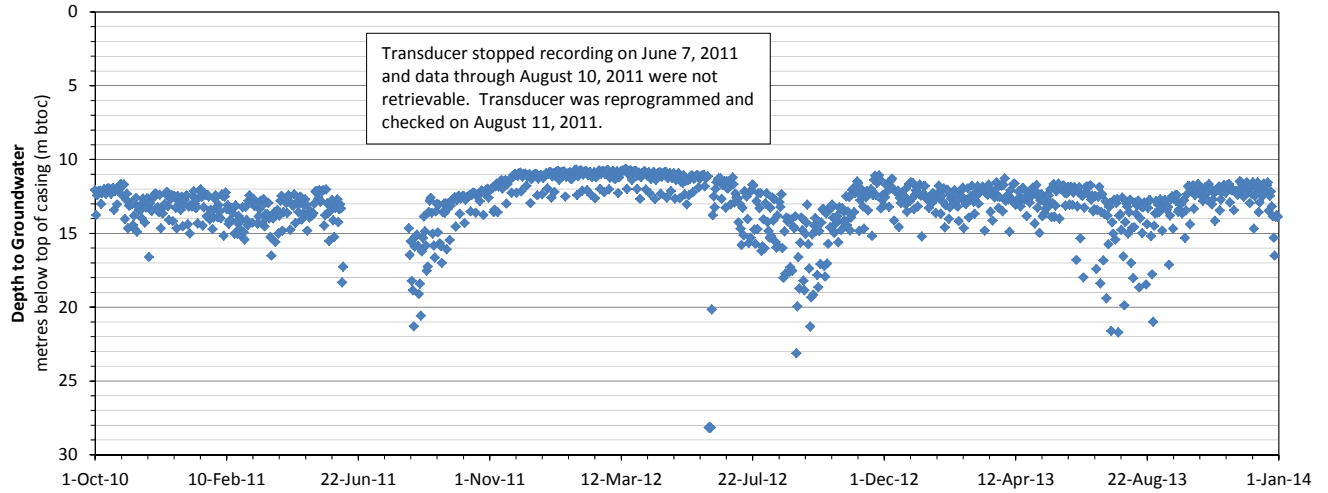
PROJECT DISTRICT OF HIGHLANDS
 GROUNDWATER PROTECTION STUDY
 HIGHLANDS, B.C.

TITLE MONITORING LOCATIONS
 DISTRICT OF HIGHLANDS

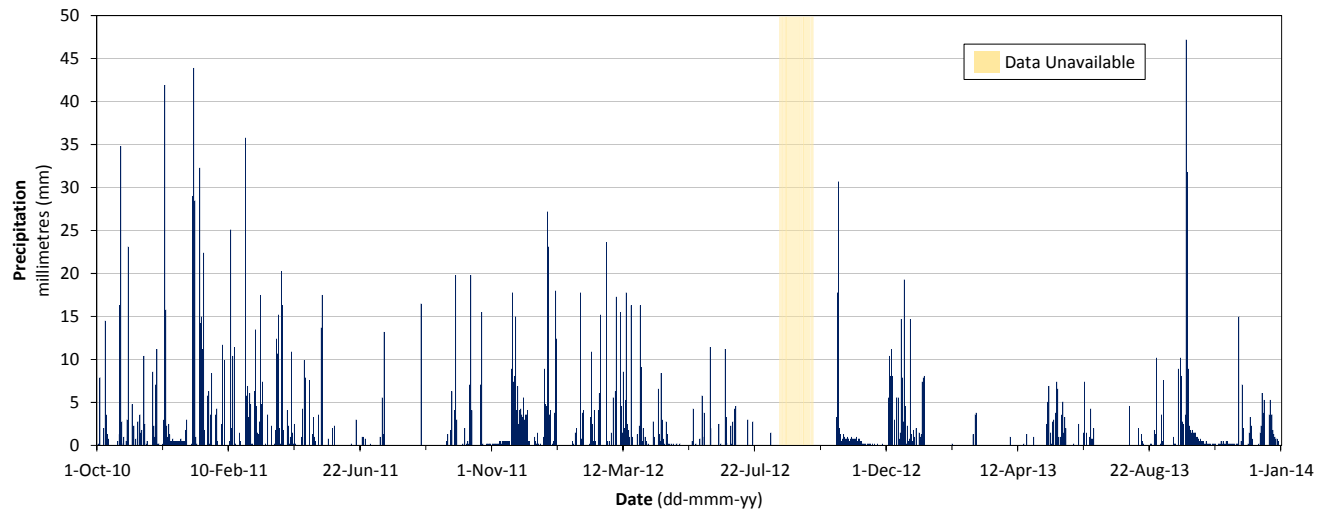


| | | | |
|--------------------------|--------|----------------|-----------------|
| PROJECT No. 13-1435-0010 | | SCALE AS SHOWN | REV. 1 |
| DESIGN | MB | 24 Apr. 2012 | FIGURE 1 |
| GIS | DSC/AD | 16 May 2016 | |
| CHECK | MAB | 5 Nov. 2015 | |
| REVIEW | JPS | 5 Nov. 2015 | |

District of Highlands Monitoring Well DOH-01



District of Highlands Office Weather Station



Notes

Water level data collected under the District of Highlands Groundwater Monitoring Program.

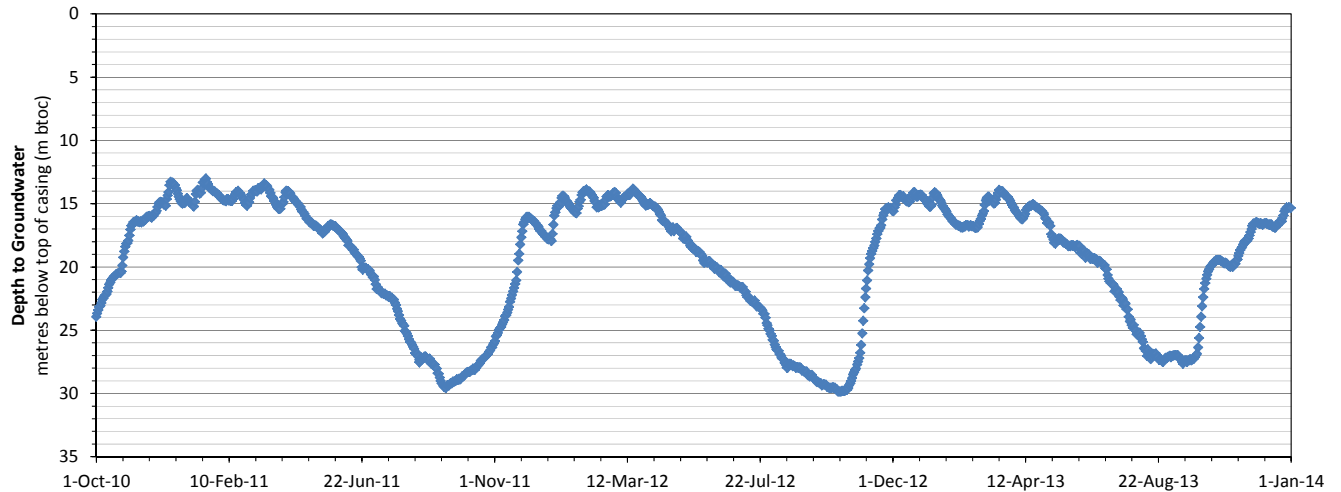
Precipitation data obtained online from the University of Victoria School-Based Weather Station Network.
<http://www.victoriaweather.ca/>

REVISION DATE: BY: FILE:

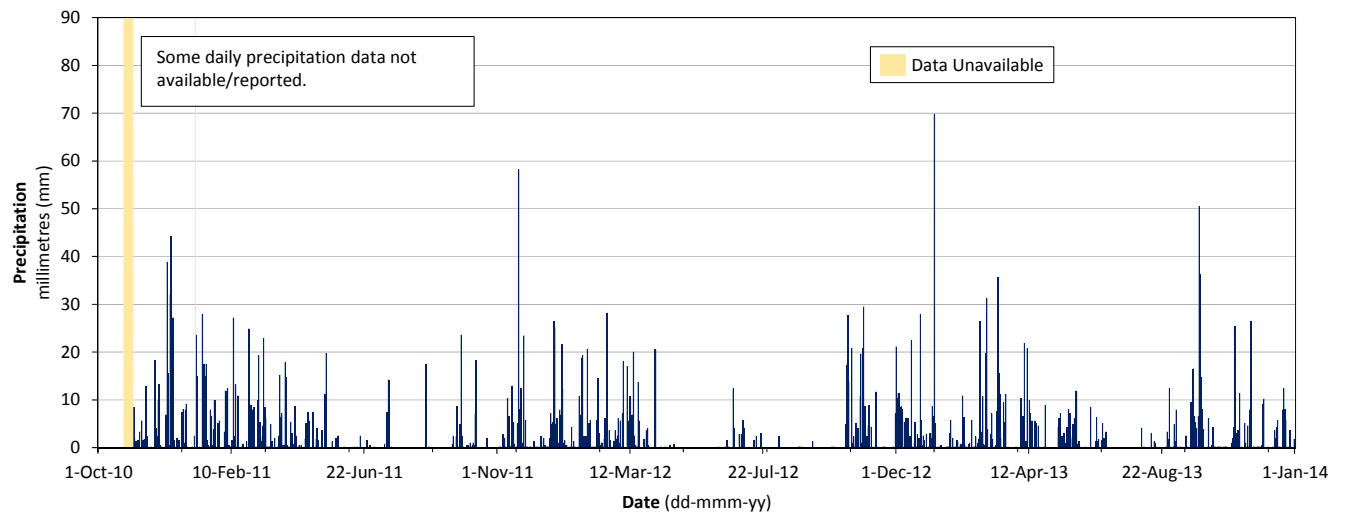
| | | | | | | | | | |
|--------------------------|-----|---------|-------|-----|--|-----------------|--|--|--|
| PROJECT | | | | | DISTRICT OF HIGHLANDS 2013 GROUNDWATER MONITORING PROGRAM HIGHLANDS, BC | | | | |
| TITLE | | | | | DEPTH TO GROUNDWATER MONITORING WELL DOH-01 AND PRECIPITATION IN SOUTHERN HIGHLANDS | | | | |
| PROJECT No. 13-1435-0010 | | | | | FILE No. ---- | | | | |
| DESIGN | CB | 14NOV06 | SCALE | NTS | REV. | | | | |
| CADD | CB | 15JAN16 | | | | FIGURE 2 | | | |
| CHECK | MAB | 15OCT28 | | | | | | | |
| REVIEW | JPS | 15OCT28 | | | | | | | |



District of Highlands Monitoring Well DOH-02A



West Highlands District Firehall Weather Station



Notes

Water level data collected under the District of Highlands Groundwater Monitoring Program.

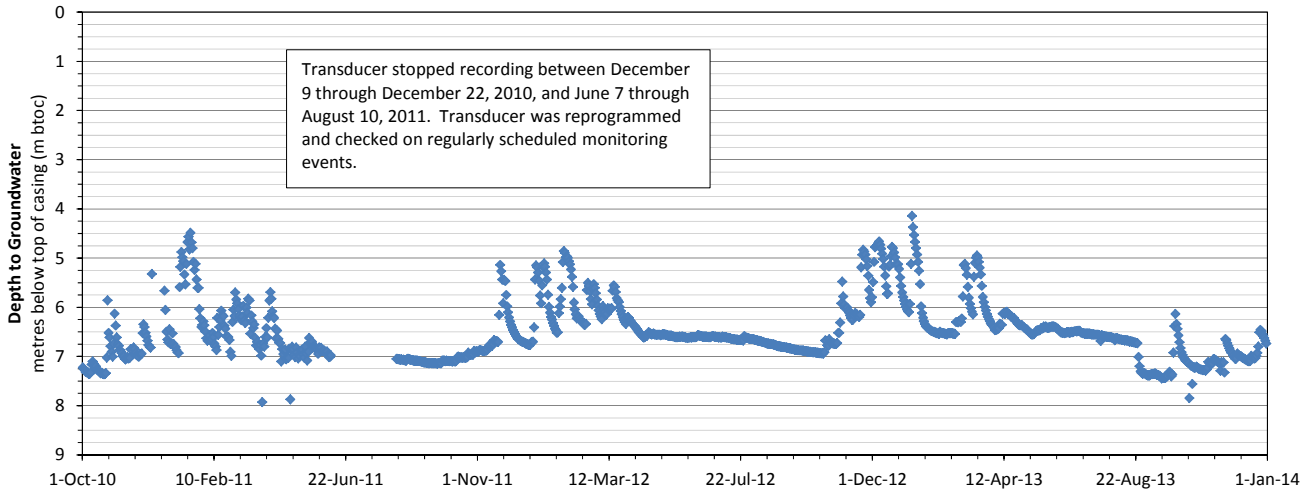
Precipitation data obtained online from the University of Victoria School-Based Weather Station Network.
<http://www.victoriaweather.ca/>

| | | | | |
|-------------|-----|--|-----------------|----------|
| PROJECT | | DISTRICT OF HIGHLANDS 2013 GROUNDWATER MONITORING PROGRAM HIGHLANDS, BC | | |
| TITLE | | DEPTH TO GROUNDWATER MONITORING WELL DOH-02A AND PRECIPITATION IN WESTERN HIGHLANDS | | |
| PROJECT No. | | 13-1435-0010 | FILE No. ---- | |
| DESIGN | CB | 14NOV06 | SCALE | NTS REV. |
| CADD | CB | 15JAN16 | FIGURE 3 | |
| CHECK | MAB | 15OCT28 | | |
| REVIEW | JPS | 15OCT28 | | |

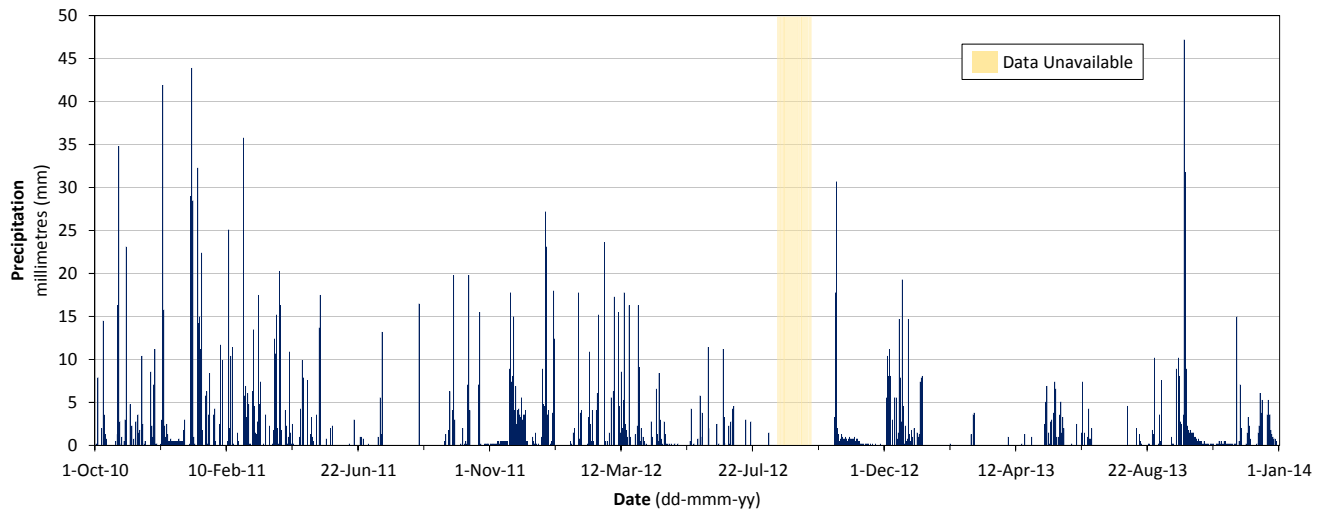


REVISION DATE: BY: FILE:

District of Highlands Monitoring Well DOH-03



District of Highlands Office Weather Station



Notes

Water level data collected under the District of Highlands Groundwater Monitoring Program.

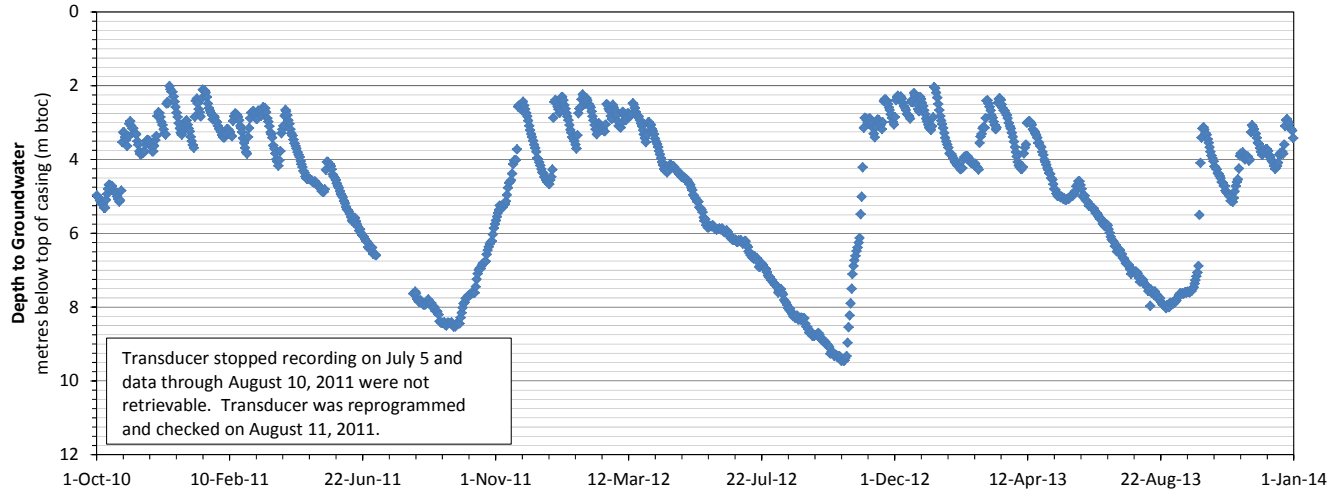
Precipitation data obtained online from the University of Victoria School-Based Weather Station Network.
<http://www.victoriaweather.ca/>

| | | | | |
|-------------|-----|--|-----------------|----------|
| PROJECT | | DISTRICT OF HIGHLANDS 2013 GROUNDWATER MONITORING PROGRAM HIGHLANDS, BC | | |
| TITLE | | DEPTH TO GROUNDWATER MONITORING WELL DOH-03 AND PRECIPITATION IN SOUTHERN HIGHLANDS | | |
| PROJECT No. | | 13-1435-0010 | FILE No. ---- | |
| DESIGN | CB | 14NOV06 | SCALE | NTS REV. |
| CADD | CB | 15JAN16 | FIGURE 4 | |
| CHECK | MAB | 15OCT28 | | |
| REVIEW | JPS | 15OCT28 | | |

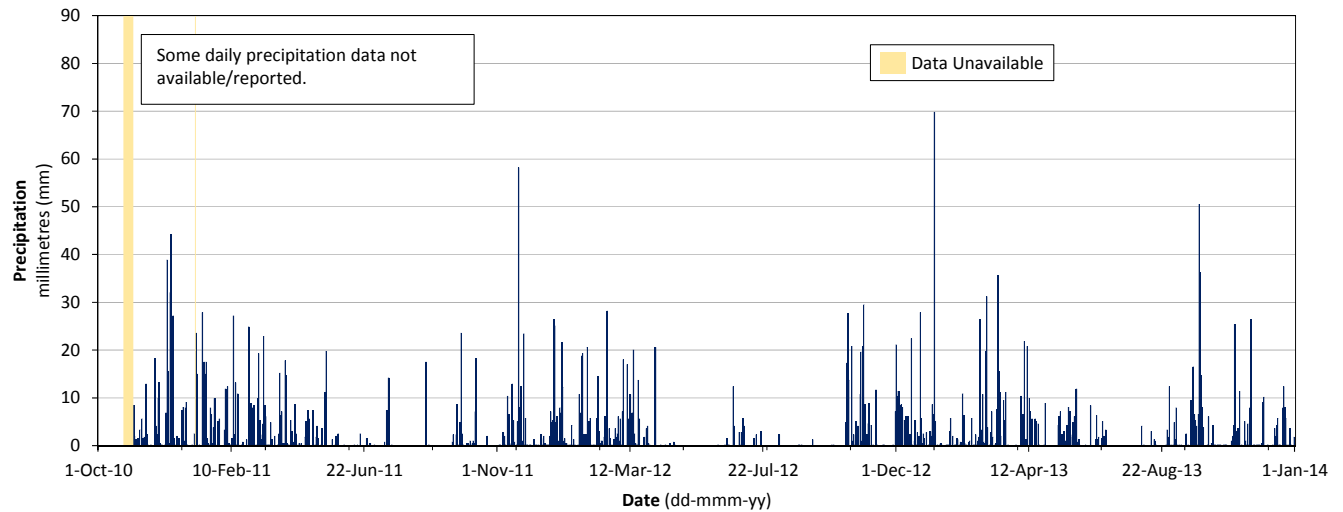


REVISION DATE: BY: FILE:

District of Highlands Monitoring Well DOH-04B



West Highlands District Firehall Weather Station



Notes

Water level data collected under the District of Highlands Groundwater Monitoring Program.

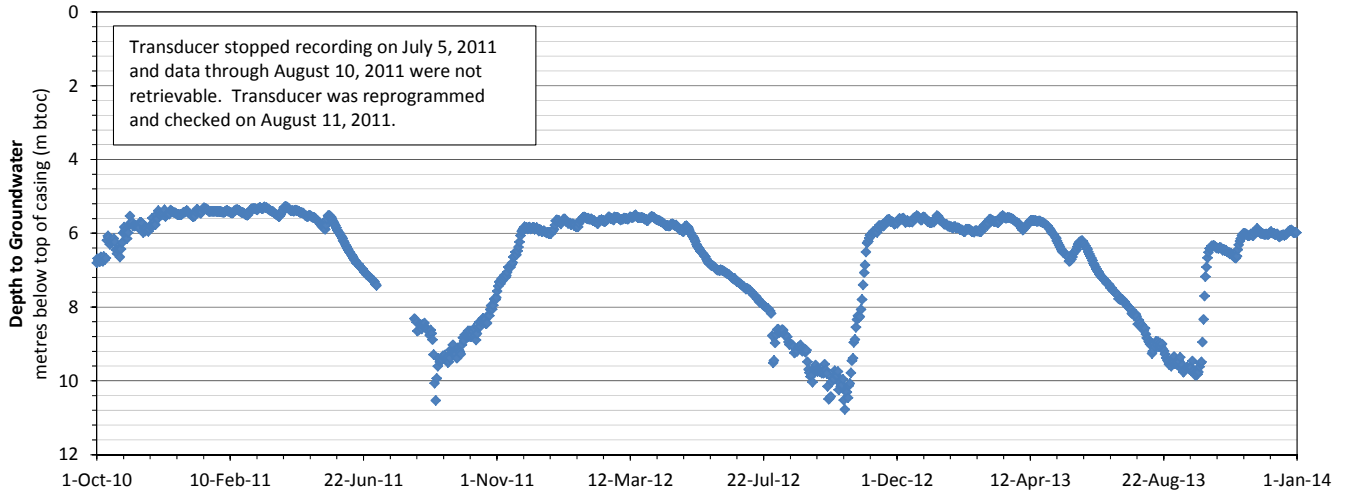
Precipitation data obtained online from the University of Victoria School-Based Weather Station Network.
<http://www.victoriaweather.ca/>

REVISION DATE: BY: FILE:

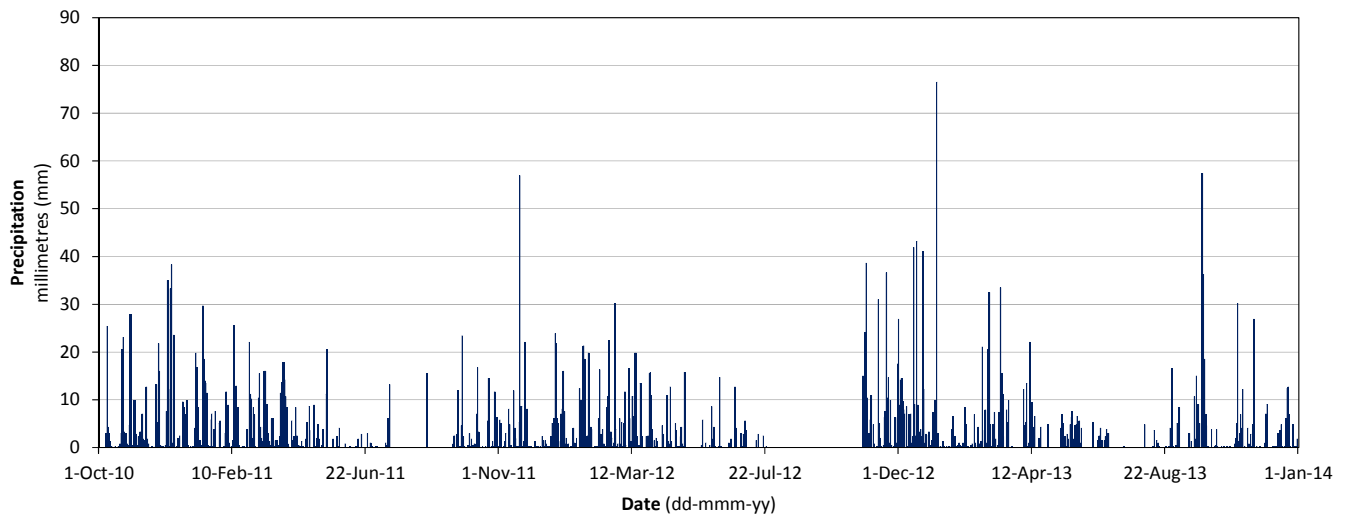
| | | | | | | | | | |
|--------------------------|-----|---------|-------|---------------|--|-----------------|--|--|--|
| PROJECT | | | | | DISTRICT OF HIGHLANDS 2013 GROUNDWATER MONITORING PROGRAM HIGHLANDS, BC | | | | |
| TITLE | | | | | DEPTH TO GROUNDWATER MONITORING WELL DOH-04B AND PRECIPITATION IN WESTERN HIGHLANDS | | | | |
| PROJECT No. 13-1435-0010 | | | | FILE No. ---- | | | | | |
| DESIGN | CB | 14NOV06 | SCALE | NTS | REV. | | | | |
| CADD | CB | 15JAN16 | | | | FIGURE 5 | | | |
| CHECK | MAB | 15OCT28 | | | | | | | |
| REVIEW | JPS | 15OCT28 | | | | | | | |



District of Highlands Monitoring Well DOH-07B



Calle Revelle Nature Sanctuary Weather Station



Notes

Water level data collected under the District of Highlands Groundwater Monitoring Program.

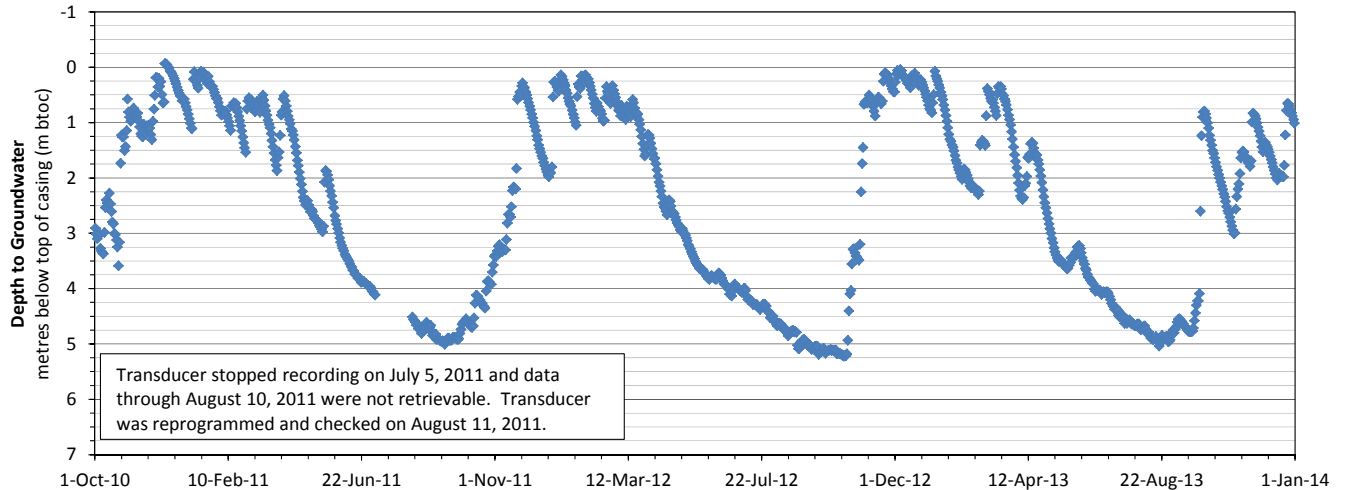
Precipitation data obtained online from the University of Victoria School-Based Weather Station Network.
<http://www.victoriaweather.ca/>

| | | | | | | |
|--------------------------|-----|---------|-----------------|---|------|--|
| PROJECT | | | | DISTRICT OF HIGHLANDS 2013 GROUNDWATER MONITORING PROGRAM HIGHLANDS, BC | | |
| TITLE | | | | DEPTH TO GROUNDWATER MONITORING WELL DOH-07B AND PRECIPITATION IN NORTHERN HIGHLANDS | | |
| PROJECT No. 13-1435-0010 | | | | FILE No. ---- | | |
| DESIGN | CB | 14NOV06 | SCALE | NTS | REV. | |
| CADD | CB | 15JAN16 | FIGURE 6 | | | |
| CHECK | MAB | 15OCT28 | | | | |
| REVIEW | JPS | 15OCT28 | | | | |

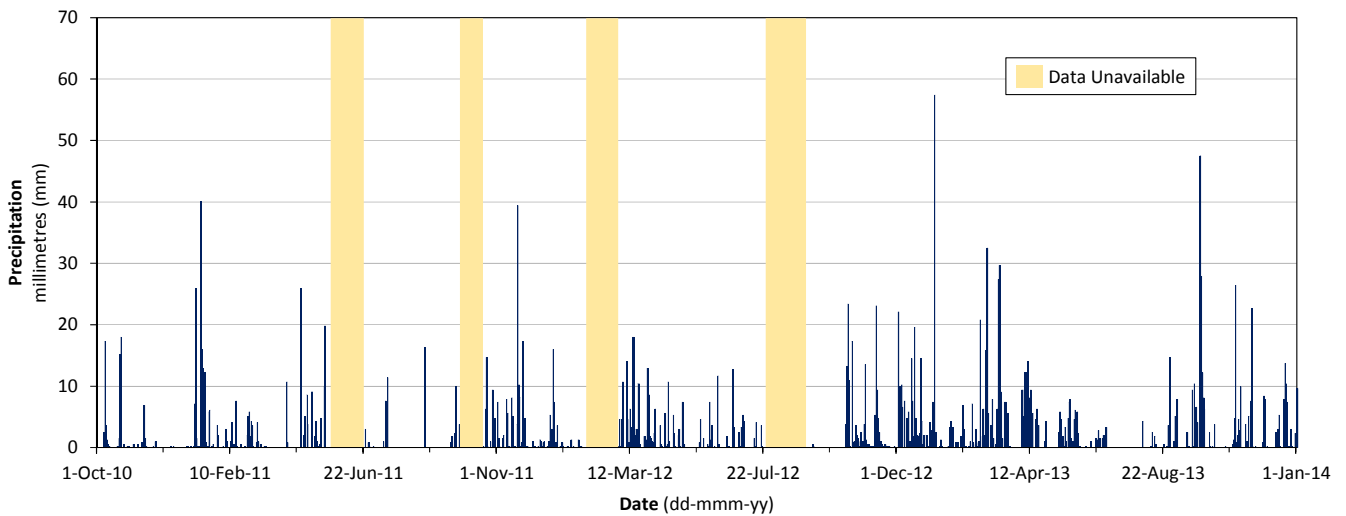


REVISION DATE: BY: FILE:

District of Highlands Monitoring Well DOH-09A



East Highlands District Firehall Weather Station



Notes

Water level data collected under the District of Highlands Groundwater Monitoring Program.

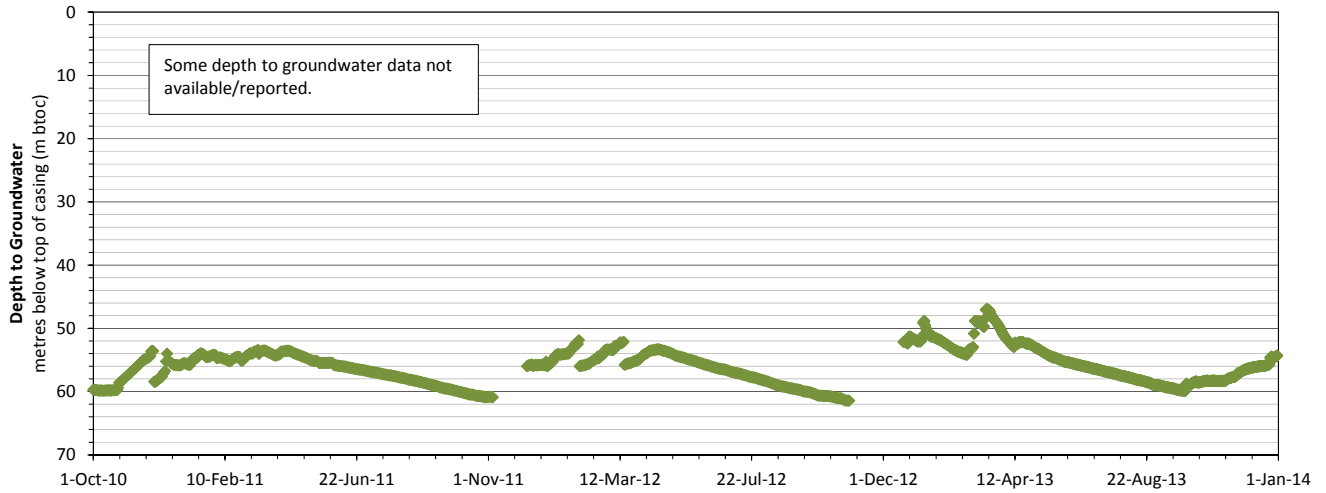
Precipitation data obtained online from the University of Victoria School-Based Weather Station Network.
<http://www.victoriaweather.ca/>

REVISION DATE: BY: FILE:

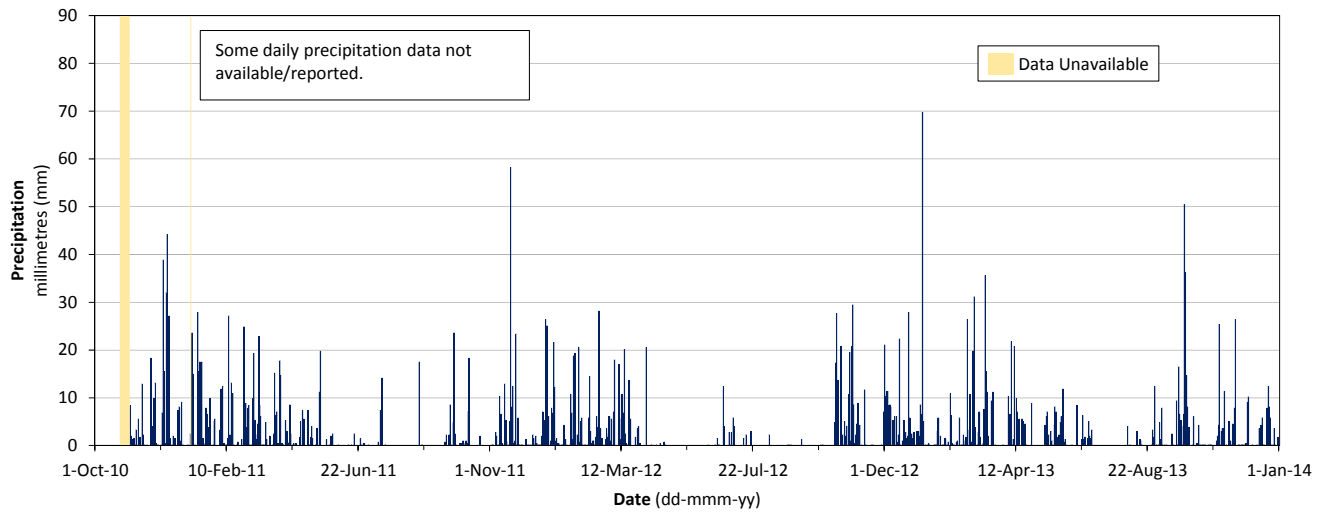
| | | | | |
|-------------|-----|--|-----------------|----------|
| PROJECT | | DISTRICT OF HIGHLANDS 2013 GROUNDWATER MONITORING PROGRAM HIGHLANDS, BC | | |
| TITLE | | DEPTH TO GROUNDWATER MONITORING WELL DOH-09A AND PRECIPITATION IN EASTERN HIGHLANDS | | |
| PROJECT No. | | 13-1435-0010 | FILE No. ---- | |
| DESIGN | CB | 14NOV06 | SCALE | NTS REV. |
| CADD | CB | 15JAN16 | FIGURE 7 | |
| CHECK | MAB | 15OCT28 | | |
| REVIEW | JPS | 15OCT28 | | |



BC Ministry of Environment Observation Well No. 372



West Highlands District Firehall Weather Station



Notes

Water level data obtained online from the Ministry of Environment British Columbia Groundwater Observation Network.
http://www.env.gov.bc.ca/wsd/data_searches/obsWell/map/obsWells.html

Precipitation data obtained online from the University of Victoria School-Based Weather Station Network.
<http://www.victoriaweather.ca/>

| | | | | | | |
|--------------------------|-----|---------|-----------------|---|------|--|
| PROJECT | | | | DISTRICT OF HIGHLANDS 2013 GROUNDWATER MONITORING PROGRAM HIGHLANDS, BC | | |
| TITLE | | | | DEPTH TO GROUNDWATER MOE OBSERVATION WELL 372 AND PRECIPITATION IN WESTERN HIGHLANDS | | |
| PROJECT No. 13-1435-0010 | | | | FILE No. ---- | | |
| DESIGN | CB | 14NOV06 | SCALE | NTS | REV. | |
| CADD | CB | 15JAN16 | FIGURE 8 | | | |
| CHECK | MAB | 15OCT28 | | | | |
| REVIEW | JPS | 15OCT28 | | | | |



REVISION DATE: BY: FILE: