



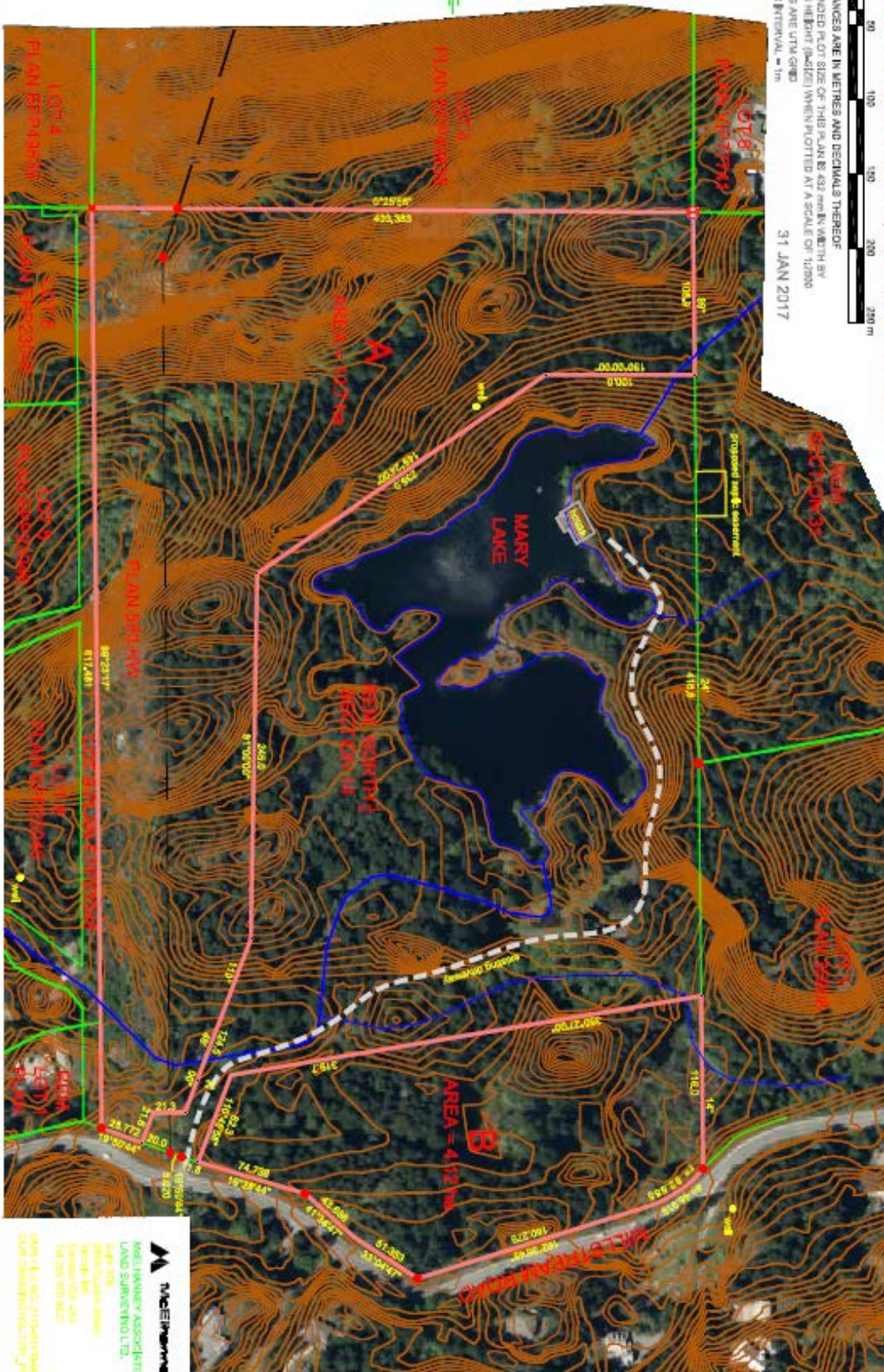




**PLAN OF PROPOSED SUBDIVISION OF PART OF  
REM. NORTH 1/2 SECTION 14, HIGHLAND DISTRICT.**

ALL DISTANCES ARE IN METRES AND DECIMALS THEREOF.  
THE INTENDED PLOT SIZE OF THIS PLAN IS 432 METRE WIDTH BY  
250 METRE DEPTH (SIZE) WHEN PLOTTED AT A SCALE OF 1:2500.  
BEARINGS ARE WITH GRID  
CONTOUR INTERVAL = 1m

31 JAN 2017



**M** M&E PARTNERSHIP  
**M&E PARTNERSHIP ASSOCIATES**  
 LAND SURVEYING LTD.  
 148-150  
 17000 16th  
 S.W. Edmonton, AB  
 T5A 0A6  
 TEL: 780 441 1111  
 FAX: 780 441 1112  
 WWW.M&E-PA.COM

