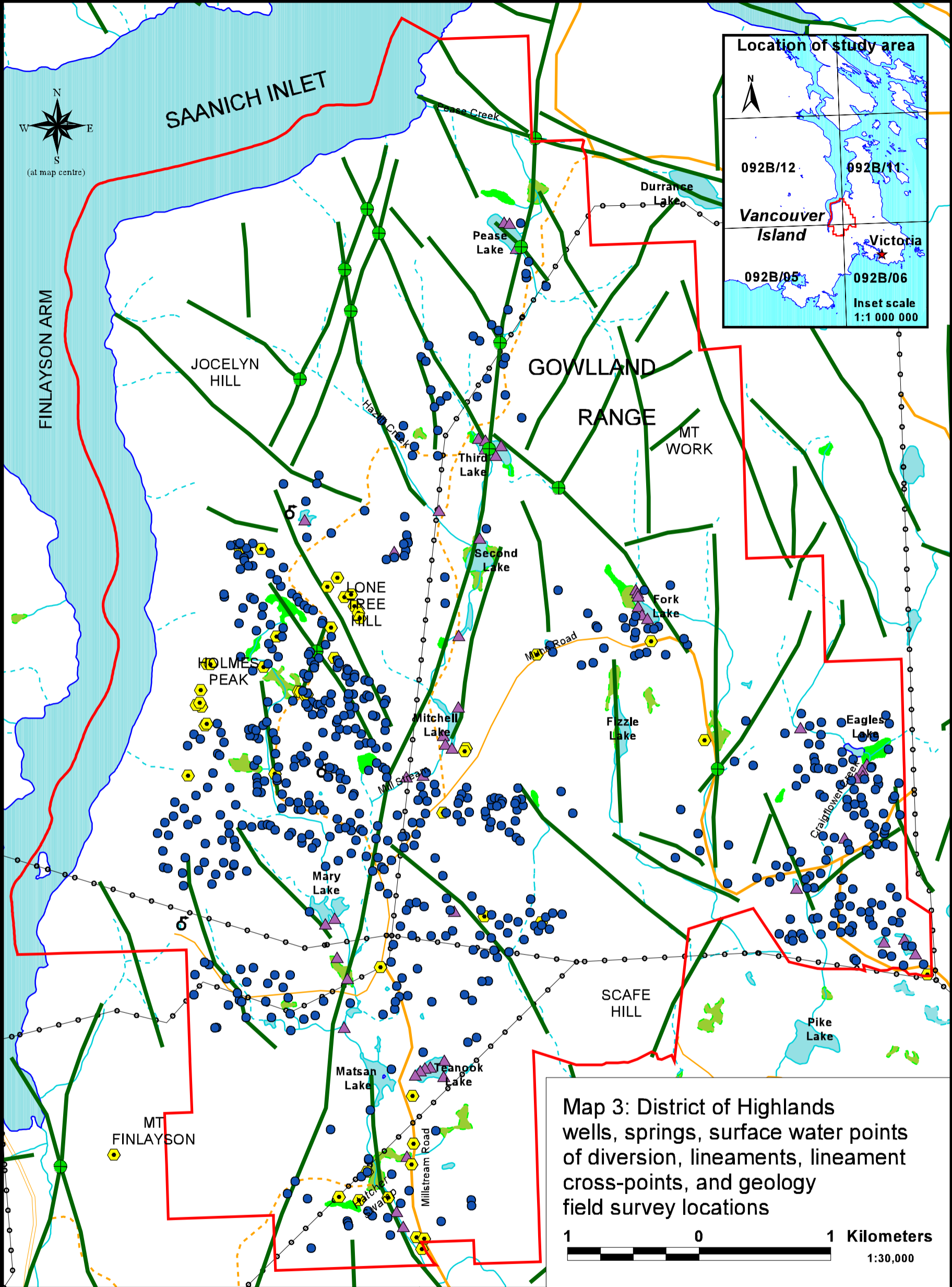
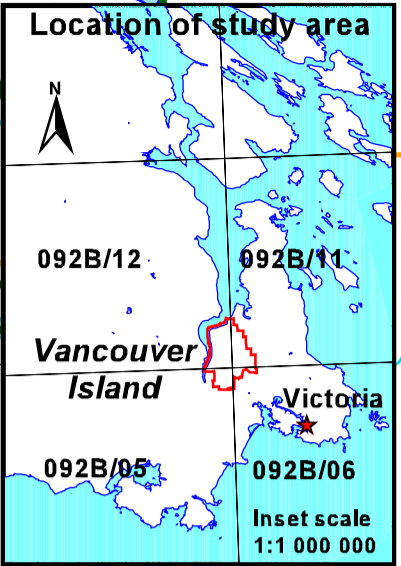


123°32'

123°30'

123°28'



Map 3: District of Highlands wells, springs, surface water points of diversion, lineaments, lineament cross-points, and geology field survey locations



Legend

- District of Highlands Municipal Boundary
- EBM, Water Polygon Features, 1:20K
- River, Stream, Lake, Coastline
- EBM, Wetland Polygon Features, 1:20K
- Flooded Land - Inundated
- Marsh
- Swamp
- TRIM, Contours, 1:20K
- Contour - Index (100 m interval)
- Contour - Intermediate (20 m interval)
- TRIM, Water Linear Features, 1:20K
- River/Stream - Definite
- River/Stream - Intermittent
- Flooded Land - Inundated
- Lake - Definite
- Lake - Intermittent
- Marsh
- Swamp
- Island - Definite
- Coastline - Definite
- NTS, Transportation - Lines
- Road
- Road
- Road
- Electrical Transmission Line
- Surface water licence point of diversion (excluding springs)
- Structural geology field survey location
- Well
- Spring
- Lineament
- Lineament Cross-Point

(Map design & layout: S.Kenny, 2004
(Compiled well data, field survey locations & springs: S.Kenny, 2004.
EMB, TRIM, NTS data and surface POD's: ©2004. B.C. Ministry of Sustainable Resource Management.
Lineaments: ©2004, M.Journeyay, Natural Resources Canada.)

123°32'

123°30'

123°28'

48°32'

48°30'

48°28'

48°32'

48°30'

48°28'